

Enhanced Care and Quality of Life

The Resident Assessment Instrument- Minimum Data Set (RAI-MDS 2.0 or RAI LTCF) is used around the world as a care management tool that assists the health care team to assess and monitor the care needs of our Residents.

The RAI assessment tool and care planning processes are designed to enhance care and promote the quality of life for our Residents. This occurs because employees across all shifts are included in the hands-on approach allowing for good communication and tracking of Resident care.

The RAI Assessment helps the Care Team to look on our Residents as individuals for whom quality of life and quality of care are very important.

THE CARE TEAM USES THE RAI ASSESSMENT PROCESSES TO PROMOTE QUALITY FOR THE FOLLOWING:

- Encouragement of Resident and Family involvement in care decisions
- Individualized Resident care
- The monitoring of our care
- Communication among employees and with our Residents and their families
- Documentation so that we can ensure continuity of care



OUR MISSION:

Park Place Seniors Living strives to provide enriched life experiences to seniors through innovation and creativity.

OUR VISION:

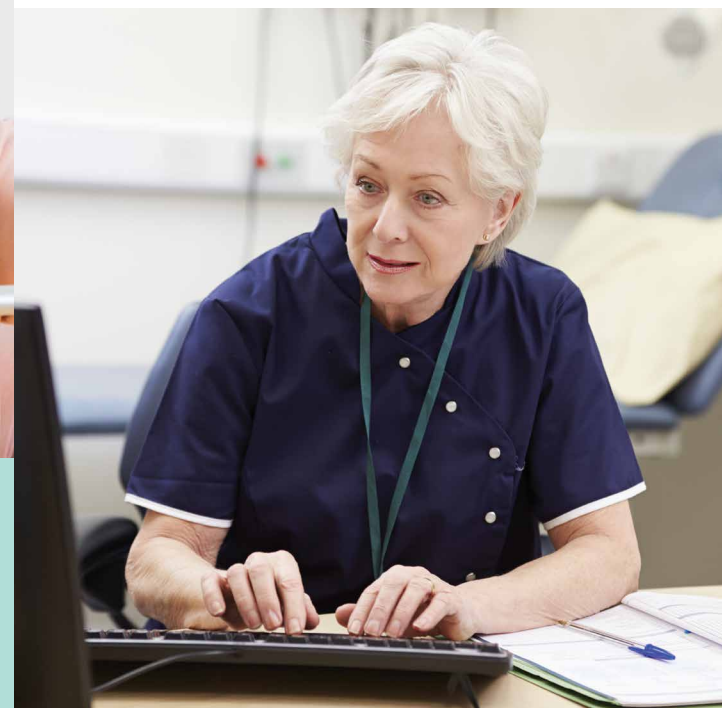
At Park Place Seniors Living we are known for our unwavering commitment to enriching the lives of those we serve by providing a voice and a choice with dignity, respect and empathy.

Park Place Seniors Living | 1656 West 75 Ave, Vancouver
parkplaceseniorsliving.com

#9

RAI Assessment

What is the Resident Assessment Instrument- Long Term Care?



Gathering Information

The RAI Assessment helps our employees to gather information on our Residents' strengths and needs, which are addressed in an individualized care plan. It also assists employees to evaluate the accomplishment of goals and revise care plans by helping the care team to track changes in the Resident's status over time.

WHO PROVIDES INFORMATION AND WHAT ARE THE BENEFITS?

All members of the Care Team collect information:

- Resident and Family
- Nursing employees
- Recreation/ Rehab therapy employees
- Dietician
- Therapy
- Social Worker
- Housekeepers, Dietary aides, Maintenance, and Administration

Each team member assesses specific aspects of a Resident's health status, needs, strengths, risks and preferences. Information is also gathered from Residents, families and other team members through daily interactions, care conferences, observations and assessments. Observations are made on a regular basis and over a set period (formal or non-formal).

As a Resident you will be assessed using the RAI-MDS Assessment tool when you move into the care Home, every 3 months, yearly and when there is a significant change in your health status.

Sharing Information



WHO IS THIS INFORMATION SHARED WITH?

The information gathered about you, or your family member is shared with you and other team members. Some information is also shared with the Canadian Institute of Health information (CIHI) for data collection and statistics.

When we share information with CIHI, we always remove your identification to ensure we respect your confidentiality.

FAST
FACT

The RAI assessment tool encourages Resident and family involvement, please ask your team members (nurse) to share your RAI assessment results



*Reviewed by a group of Park Place
Family Representatives*