





Sunday	Monday	Tuesday	Wednesday	Thursday	Friday	Saturday
<div>   <div> <h1>November 2025</h1> <h2>Maple Court & Willow Place</h2> </div> </div>						
<div> <div>2</div> <div> 10 Cooking Club – Chili con Carne/Garlic Bread C 1:30 Hymn Sing A 3:30 Bingo C <small>Daylight Saving Time Ends</small> </div> </div>	<div> <div>3</div> <div> 10 Drum Fit GR 11 Aromatherapy 1:30 Entertainment with Brian Zalo A 3:30 Puzzles and Coloring GR </div> </div>	<div> <div>4</div> <div> 10 Ball Fitness GR 11 Sensory Stimulation 1:30 Baking: OTIS Spunk Mayer Cookies A 3:30 Helping Hands GR </div> </div>	<div> <div>5</div> <div> 10 Exercise: Chair Fit 11 Gentle Connection GR 1:45 Movie Matinee </div> </div>	<div> <div>6</div> <div> 11 Kindergarten Visits With Pacific Academy C 1:30 Arts & Crafts – Paper Poppy Wall Decoration GR 3:30 Bingo C </div> </div>	<div> <div>7</div> <div> <i>11 Communion Service St. Nicholas Church A</i> 1:30 Puzzles and Coloring 3:30 Active Game </div> </div>	<div> <div>8</div> <div> 10 Arts & Crafts A (Christmas Market) 1:30 Active Game 3:30 Tuck Cart </div> </div>
<div> <div>9</div> <div> 10 Chair Exercises 11 Morning coffee and Chat <i>1:30 Church Service Living Waters A</i> 3:30 Card Game </div> </div>	<div> <div>10</div> <div> 10 Remembrance Day Tea GR 1:30 Laundry Basketball GR 3:30 Bingo C </div> </div>	<div> <div>11</div> <div> 10:30 Remembrance Day Service A <i>1:30 Sing Along with Christine A</i> 3:30 Helping Hands GR <small>Veterans Day Remembrance Day (Canada)</small> </div> </div>	<div> <div>12</div> <div> 10 Bowling GR 11 Gentle Connection 1:30 Prayer Group V 3:30 Arts and Puzzles </div> </div>	<div> <div>13</div> <div> 11 Kindergarten Visits With Pacific Academy M 1:30 Manicure & Hand Massage GR 3:30 Bingo C </div> </div>	<div> <div>14</div> <div> 10 Bean Bag Toss 11 Gentle Connection 1:30 Cup Challenge 3:15 Music With Ravensong A </div> </div>	<div> <div>15</div> <div> 10 Cooking Club - Buttered Tofu C 1:30 Chicken Soup Stories 3:30 Tuck Cart </div> </div>
<div> <div>16</div> <div> 10 Chair Exercises 11 Morning coffee and Chat <i>2:00 Church Service Evangelical A</i> 3:30 Card Game </div> </div>	<div> <div>17</div> <div> 10 Ball Kick GR 11 Gentle Connection 1:30 Craft Corner GR 3:30 Bingo C </div> </div>	<div> <div>18</div> <div> 10 Balloon Toss GR 11 Willow Connection 1:30 Sing Along GR 3:30 Card Game GR </div> </div>	<div> <div>19</div> <div> 10 Indoor Bocce GR 11 Aromatherapy 1:45 Movie Matinee </div> </div>	<div> <div>20</div> <div> 11 Kindergarten Visits With Pacific Academy A 1:30 Manicure and Hand Massage GR 3:30 Bingo C </div> </div>	<div> <div>21</div> <div> <i>11 Legion of Mary Rosary – St. Nicholas</i> 1:30 Connect 4 & Trivia 3:30 Helping Hands </div> </div>	<div> <div>22</div> <div> 10 Exercises 11 Gentle Connection 1:30 Active Game 3:30 Tuck Cart </div> </div>
<div> <div>23</div> <div> 10 Apple Cider & Donut Social 1:30 Hymn Sing A 3:30 Bingo C </div> </div>	<div> <div>24</div> <div> 10 Chair Exercises 11 Trivia 1:45 Birthday Party with Gregg Gorrie A 3:30 Friendly Visits </div> </div>	<div> <div>25</div> <div> 10 Christmas Decorating 11 Willow Connection <i>1:30 Sing Along with Christine A</i> 3:30 Card Game M </div> </div>	<div> <div>26</div> <div> 10 Christmas Decorating 1:30 Prayer Group V 3:30 Arts & Puzzles M </div> </div>	<div> <div>27</div> <div> 11 Kindergarten Visits With Pacific Academy C 1:30 Reading Club M 3:30 Bingo C <small>Thanksgiving Day (U.S.)</small> </div> </div>	<div> <div>28</div> <div> 10 Christmas Decorating 1:30 Chuck the Duck W 3:15 Music With Ravensong A </div> </div>	<div> <div>29</div> <div> 10 Christmas Decorating 11 Chicken Soup for the Soul and Coffee GR 1:30 Craft Corner 3:30 Tuck Cart </div> </div>
<div> <div>30</div> <div> 10 Chair Exercises 11 Morning Chat and Coffee 1:30 Hymn Sing A 3:30 Card Game </div> </div>	<div>  <div> <h3>Program Venue</h3> <p> M = Maple Court W = Willow Place V = Virtual GR = Great Room C = Cherry Lane A = Alder Way </p> </div>  </div>					

Sunday	Monday	Tuesday	Wednesday	Thursday	Friday	Saturday
<div>  <div> <h1>November 2025</h1> <p>Alder Way & Cherry Lane.</p> </div>  </div>						
<div> <div>2</div> <div> 10 Cooking Club – Chili con Carne/Garlic Bread C 1:30 Hymn Sing A 3:30 Bingo C <small>Daylight Saving Time Ends</small> </div> </div>	<div> <div>3</div> <div> 10 Autumn Stretch A 11 Reading Club C 1:30 Entertainment with Brian Zalo A 3:30 Helping Hands C </div> </div>	<div> <div>4</div> <div> 10 Coffee Chatter A 1:30 Nail Spa A 3:30 LCR Game C </div> </div>	<div> <div>5</div> <div> 10 Morning Exercises A 11 Mental Stimulation C 1:45 Movie Matinee A </div> </div>	<div> <div>6</div> <div> 11 Kindergarten Visits With Pacific Academy C 1:30 Curling A 3:30 Bingo C </div> </div>	<div> <div>7</div> <div> 10 Gentle Connection C <i>11 Communion Service St. Nicholas Church A</i> 1:30 Trivia A 3:30 Crazy 8's </div> </div>	<div> <div>8</div> <div> 10 Arts & Crafts A (Christmas Market) 1:30 Aroma Therapy A 3:30 Tuck Cart </div> </div>
<div> <div>9</div> <div> 10 Coffee Chatter C <i>1:30 Church Service Living Waters A</i> 3:30 Karaoke C </div> </div>	<div> <div>10</div> <div> 10 Remembrance Day Tea GR 1:30 Robotic Pet Visits 3:30 Bingo C </div> </div>	<div> <div>11</div> <div> 10:30 Remembrance Day Service A <i>1:30 Sing Along with Christine A</i> 3:30 Crazy 8's C <small>Remembrance Day (Canada)</small> </div> </div>	<div> <div>12</div> <div> 10 Morning Exercises A 11 Trivia C 1:30 Prayer Group V 3:30 Card Game C </div> </div>	<div> <div>13</div> <div> 11 Kindergarten Visits With Pacific Academy M 1:30 Name That Tune (Christmas Version) 3:30 Bingo C </div> </div>	<div> <div>14</div> <div> 10 Baking C 1:30 Nail Spa 3:15 Music With Ravensong A </div> </div>	<div> <div>15</div> <div> 10 Cooking Club - Buttered Tofu C 1:30 Aroma Therapy C 3:30 Tuck Cart </div> </div>
<div> <div>16</div> <div> 10 Coffee Chatter C <i>2:00 Church Service Evangelical A</i> 3:30 Creative Corner </div> </div>	<div> <div>17</div> <div> 10 Autumn Stretch A 11 Reading Club C 1:30 Nail Spa A 3:30 Bingo C </div> </div>	<div> <div>18</div> <div> 10 Bocce Ball A 11 Puzzle C 1:30 Nail Spa C 3:30 Crazy 8's A </div> </div>	<div> <div>19</div> <div> 10 Curling A 11 Match the Cards A 1:45 Movie Matinee A </div> </div>	<div> <div>20</div> <div> 11 Kindergarten Visits With Pacific Academy A 1:30 Chair Exercises 3:30 Bingo C </div> </div>	<div> <div>21</div> <div> <i>11 Legion of Mary Rosary – St. Nicholas</i> 1:30 Chair Exercises 3:30 Card Game </div> </div>	<div> <div>22</div> <div> 10 10 Arts & Crafts A (Christmas Market) 1:30 Aroma Therapy A 3:30 Tuck Cart </div> </div>
<div> <div>23</div> <div> 10 Coffee Chatter C 1:30 Hymn Sing A 3:30 Bingo C </div> </div>	<div> <div>24</div> <div> 10 Autumn Stretch C 11 Match the Cards A 1:45 Birthday Party with Gregg Gorrie A 3:30 Helping Hands C </div> </div>	<div> <div>25</div> <div> 10 Christmas Decorating <i>1:30 Sing Along with Christine A</i> 3:30 LCR Game C </div> </div>	<div> <div>26</div> <div> 10 Christmas Decorating 1:30 Prayer Group V 3:30 Table Game C </div> </div>	<div> <div>27</div> <div> 11 Kindergarten Visits With Pacific Academy C 1:30 Name That Tune 3:30 Bingo C <small>Thanksgiving Day (U.S.)</small> </div> </div>	<div> <div>28</div> <div> 10 Christmas Decorating 11 Mental Stimulation C 1:30 Card Game C 3:15 Music With Ravensong A </div> </div>	<div> <div>29</div> <div> 10 Morning Exercises 11 Trivia 1:30 Card Game 3:30 Tuck Cart </div> </div>
<div> <div>30</div> <div> 10 Creative Corner GR 1:30 Hymn Sing A 3:30 Christmas Decorating </div> </div>	<div>  <div> <p><u>Program Venue</u></p> <p>M = Maple Court W = Willow Place V = Virtual GR = Great Room C = Cherry Lane A = Alder Way</p> </div>  </div>					

The Scoop

Fort Langley Seniors Community



November 2025

By Mikayla Vander Helm, Recreation Manager BTR



WHAT'S NEW

TAKE A LOOK INSIDE

For updates in the community

UPCOMING EVENTS & PHOTOS

Upcoming events and check
out photos!

SITE LEADER CORNER

Check-in from our Site Leader
- Erick

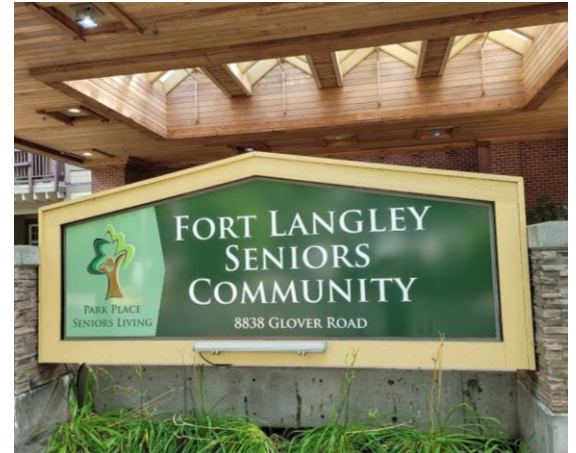
Table of Contents

Upcoming Events	3
Photos of FLSC	4
Home Updates	5
Site Leaders Corner	6
Contact Information	7
Fun Corner	8
Appreciation	9
Other	10

Our Mission

What We Do

Park Place Seniors Living Strives to provide enriched life experiences to seniors through innovation and creativity.



Our Vision

Why We Exist

At Park Place Seniors Living we are committed to ensuring a “voice and a choice” for everyone we serve.

Subscribe

To receive our monthly newsletter with updates.

Are you receiving our monthly newsletter via email? If not, and you would like to please email: fortlangley.rectherapy@ppsl.com

Upcoming Events:

For the month

- ❖ Monday Nov 3 at 1:30 – **Entertainment with Brian Zalo**
- ❖ **Resident & Family Council Meeting** – Tuesday Nov 4 at 1:30pm See page 5 for more details).
- ❖ Friday Nov 7 & 21 11:00am – **Communion and Rosary Service with St. Nicholas Church**
- ❖ Tuesday Nov 11 at 10:30 – **Remembrance Day Service**
- ❖ Friday Nov 14 & 28 at 3:15 – **Music with Ravensong**
- ❖ Friday Nov 11 & 25 at 1:30 – **Sing Along with Christine**
- ❖ Sunday Nov 9 & 16 – **Church Service with Evangelical and Living Waters** (Check activity calendar for service times)
- ❖ Monday Nov 24 at 1:45pm– **Monthly Birthday Party with Gregg Gorrie** (See page 8 for more details)
- ❖ Thursdays at 11am (rotating floors) - **Kindergarten Visits with Pacific Academy**

Please check the daily activity board in each neighborhood

Programs are subject to change.

Pictures of FLSC



Home Updates

Resident & Family Council Meeting

Join us for our monthly resident and family council meeting.

When: Tuesday

Where: Great Room (2nd Floor)

Family Monthly Education

Park Place Seniors Living Brochure:

1. Safety First – I have a Safety Concern
2. Bed Rail Safety
3. Behavior Safety Plans
(Brochures located in Lobby)

Code of the Month: November – Yellow – Missing Resident



**EMERGENCY RESPONSE CODE YELLOW:
MISSING RESIDENT**

EMERGENCY RESPONSE CODE

CODE YELLOW – MISSING RESIDENT

What does it mean?

- Code Yellow is the phrase used to alert employees to an incident in which there is a missing Resident
- All Park Place Seniors Living Homes have a plan for managing Code Yellow that provides employees with directions to assist with searching the Home and grounds to locate and return the missing person

What do I do?

- When a person is determined to be missing a Code Yellow is activated
- The site will announce Code Yellow (by the overhead paging system)
- This directs employees to search for the person as efficiently and effectively as possible. The decision to escalate Code Yellow is dependent primarily upon:
 - Whether information suggests an actual or suspected abduction or an elopement
 - The initiating area's risk assessment of factors associated with the missing person
- The "Person in Charge" will provide photographs of the Resident for identification, assign specific employees to search specific areas, and keep a written log of:
 - which employee was designated to which area
 - time searcher was dispatched
 - time searcher returned; and
 - results of the search
- If the person is not located after an initial search of the Home and the grounds the "Person in Charge" will contact local police department (e.g., City Police or RCMP) for assistance and provide them with Resident description and photograph
- All employees remain on the alert & lookout until the "All Clear" is announced



Why has My Loved One's Appetite Changed?



Death of a Loved One: How to Prepare



Changes Near the End of Life



Reminder: Flu Season Update

Our residents are vulnerable to the influenza virus, and at an increased risk of developing flu-related complications such as pneumonia.

While influenza vaccines do not provide complete protection, overall, they remain the best way to prevent influenza and are an important control measure in conjunction with regular hand cleaning and respiratory hygiene.

Help us be flu-free and **don't forget your flu shot.**

Thank you for helping keep our residents healthy!

Learn more about Code Yellow before you need it:

- Refer to your Park Place Emergency Preparedness & Response Manual
- Review your Home's Code Yellow – Missing Resident Response Plan

EPRM 07-05-01.01

Date Created: June 2019
Current Version Date: March 2020
Page 1 of 1

Site Leaders Corner

As we move into November and the cooler days settle in, we take a moment to reflect on the past month with pride. October brought its share of challenges, as our team navigated a COVID enhanced monitoring. Through it all, the dedication, teamwork, and compassion shown by our staff were truly inspiring. Their commitment ensured our residents continued to receive the highest quality of care, comfort, and support. A heartfelt thank you to every team member who went above and beyond, you are the heart of our community.

Despite the challenges, October was also filled with moments of connection and resilience. Residents found joy in small gatherings, cozy activities, and the beautiful fall scenery surrounding Fort Langley.

Looking ahead, November is a time for reflection and gratitude. We're excited to host our upcoming **Remembrance Day Ceremony** on Alder at 10:30am, honoring those who have served and continue to serve our country. This special event gives us the opportunity to pause, remember, and give thanks for the freedoms we enjoy today. Families and friends are warmly invited to join these gatherings; your presence truly makes our celebrations complete.

As the holiday season approaches, we look forward to brighter days ahead!

Erick Bautista, *Site Leader*

Park Place Seniors Living Annual Resident and Family Satisfaction Survey 2025

Dear Resident and or Family Member,

We are committed to providing the highest quality of care and ensuring the well-being and satisfaction of our Residents and their families. To help us achieve this goal, we kindly invite you to share your experiences and feedback through our Resident and Family Satisfaction Survey.

Your insights are invaluable in guiding our continuous quality improvement efforts, helping us to understand what we are doing well and where we can make enhancements. Whether it's about the care received, the Home you live in, our staff, or any other aspect of your experience, we want to hear from you.

The survey should only take a few minutes to complete, and your responses will be kept confidential. Your honest and constructive feedback is crucial for us to foster a supportive and caring environment for all our residents and their families. Please take a moment to click on the link below and share your thoughts and experiences: <https://forms.office.com/r/1aL0Xqtcnt>

Or use this QR Code:



Thank you for taking the time to help us improve and for being an integral part of our community. We look forward to your valuable input. Recreation staff will be assisting residents to access the survey. Families, please complete independently using link or QR code above. **Survey Deadline is November 14, 2025**

Contact Information *Fort Langley Seniors Community 604.888.0711*

<i>Site Leader</i>	Erick Bautista	Ext. 121	ebautista@ppsl.com
<i>Maintenance</i>	Mike Harnden	Ext. 124	fortlangley.maintenance@ppsl.com
<i>Support Services</i>	Jag Pahal	Ext. 125	jpahal@ppsl.com
<i>Admin Assistant</i>	Lynn Harrie	Ext. 100	lharrie@ppsl.com
<i>Care – Coordinator</i>	Amber Develder	Ext. 132	fortlangley.care-coordinator@ppsl.com
<i>HR Coordinator</i>	Darlene Dela Cruz	Ext. 123	fortlangley.hr@ppsl.com
<i>Recreation & Volunteer Manager</i>	Mikayla Vander Helm	Ext. 126	fortlangley.rectherapy@ppsl.com
<i>Care Aide Liaison</i>	Lois Black	Ext. 127	lblack@ppsl.com
<i>Social Worker</i>	Jean Tuyisenge	Ext. 131	fortlangley.socialworker@ppsl.com Onsite Monday, Thursday, and Fridays
<i>Dietitian</i>	Caitlyn McNeil		Fortlangley.dietitian@ppsl.com Onsite Tuesday, Wednesday, and Thursdays
<i>Occupational Therapist</i>	Jane Chang	Ext. 129	Jane.chang@saliusrehab.ca Onsite Tuesdays and Thursdays
<i>Physiotherapist Temp</i>	Janki Jariwala	Ext. 129	janki.jariwala@saliusrehab.ca Onsite Tuesdays and Fridays
<i>Nurse 1</i> <i>Nurse 2</i>	Alder Cherry Willow Maple	Ext. 128 Ext. 160 Ext. 170 Ext. 221	Please call the extension for the correct neighborhood.

Fun Corner & Other



REMEMBRANCE DAY
Lest We Forget

Lest we forget

Join us on November 11 at 10:30 in Alder
Way for our Remembrance Day Service



November

BIRTHDAYS

Lino C - Nov 18

Karen C - Nov 21

Lucrecia R - Nov 24

Marlene S - Nov 28

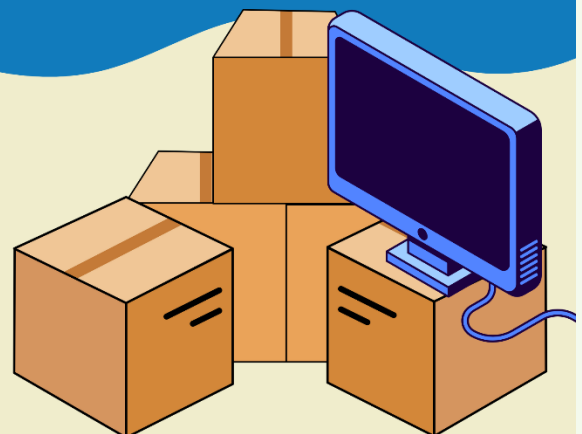
Christopher W - Nov 28



NOVEMBER
Birthday
PARTY

Monday Nov 24 at
1:45 with Gregg
Gorrie in Alder

DONATION NEEDED:
XL SMART TV FOR
WILLOW PLACE
COMMON AREA



to help with stimulation, playing music and videos
in the common area.

Staff Events

Bottle Returns: For staff appreciation.
More information on the flyer below:

BOTTLE RETURNS FOR STAFF APPRECIATION AND EVENTS!



Support our staff and upcoming events by
recycling your bottles!



How it Works:

- Return bottles at any Return It Depot.
- Use the number **604-374-3542** to print labels for your bags
- No sorting needed. **604-374-3542** print the label and apply it to your bag.

Need Help?

Drop off your bags at our facility, and we can handle them for you!

Thank you for
your Support!



Appreciation

Employee of the Month: September Gurmit



HCA Appreciation Day: Oct 17



Other

Recreation Department Wishlist

Individually pre-wrapped snack sized chocolate – For Bingo Prizes

Take a look at our Amazon Wishlist & order right from Amazon:

https://www.amazon.ca/hz/wishlist/ls/3HY45HMBVT89J?ref_=wl_share

- Thank you



Reminder – Purchase Your Meal Tickets in Advance!

Pre-buy meal tickets from Admin. Must provide ticket to receive meal. More details below:

FAMILY AND FRIENDS MEAL TICKETS

PRE-BUY MEAL TICKETS FROM ADMIN - LYNN MONDAY TO FRIDAY. TO RECEIVE MEAL GIVE TICKET TO NURSE AT MEALTIME

FORT LANGELY SENIORS COMMUNITY

PRICE

**\$8 -
LUNCH
\$10 -
DINNER**